



We are engaged in the business of importing, exporting and retailing Industrial Sheet, plates and Coils . Characterized by dimensional accuracy and corrosion-resistance, these products have gained wide acceptance in the market.

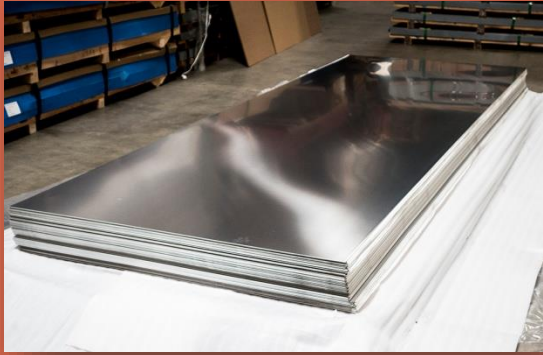


About us

Precision Impex is a leading Stockist & Supplier of all Ferrous & Non-Ferrous Metals . As a pioneer and leader in the Supplier industry, Precision Impex is at the forefront of technology and research. We are constantly innovating, listening to the rapidly changing market and giving the consumer the best value for his money.

We have great pleasure to introduce ourselves as one of the leading Stockist & Suppliers of Stockists & Suppliers of Sheet, Coil, Plate, Strips and Designer Sheet etc. Lead in the shape of Sheet, Coil, Plate and Strips, Designer Sheet and the entire range of Pipe Fittings. We are based in Mumbai (India), the company has scaled incredible heights in business owing to its innovative products. The company's productivity and clients base is always on an upward swing.

We believe that commercial success and corporate responsibility should go hand-in-hand. We must therefore recognise and manage the impact of our business and its contribution to society. Responsible behaviour is not just the ethical way to act.



Stainless steel sheet

We are one of most trusted exporter and suppliers of Stainless Steel Sheets, SS Sheets. We offer wide variety of specification, thickness, grades and dimension of stainless steel sheet. Stainless steel sheet is available in Type 304 and Type 316.

We supplies stainless steel sheets to the industries like Petrochemical & Refinery, Oil & Gas, Nuclear Power Plants, Chemical, Fertilizer & Sugar, Defence & All major process industries. stainless steel sheets is used to manufacture parts and products for a wide range of applications. Properties:

High strength

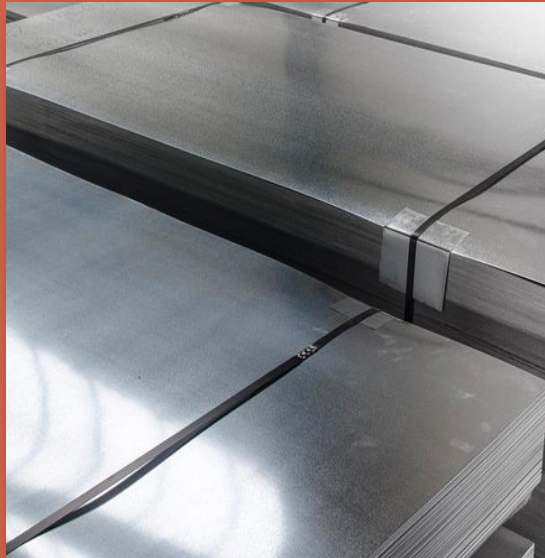
High corrosion resistance

High toughness

High workability, including fabricating, welding, machining, stamping

Smooth surface finish that can be easily clean and sterilized

Temperature resistance



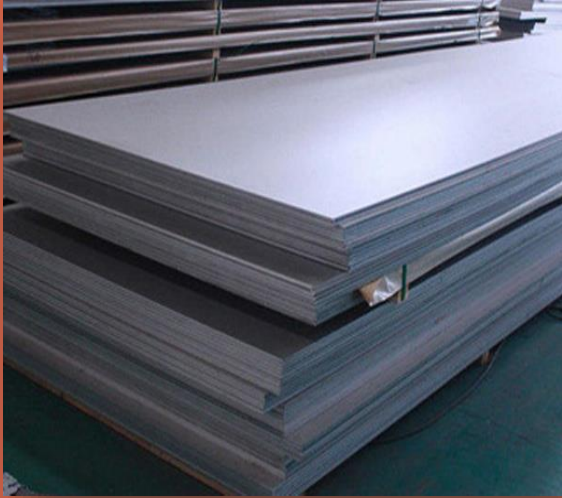
304/304L/304H STAINLESS STEEL SHEET

Precision Impex are imports, exporters & suppliers of SS 304/304L/304H Sheets. In the midst of our extensive variety of products, we are additionally occupied with offering a predominant quality Stainless Steel 304/304L/304H Sheets that is generally utilized as a part of different designing and development commercial ventures. Our offered Stainless Steel 304/304L/304H Sheets is produced at merchants' end utilizing the most recent innovation and prevalent quality stainless steel. Aside from this, if sheet is entirely tried on different quality measures to guarantee its faultlessness. Our significant customers can benefit this sheet from us at business sector driving costs.

With the steady backing of our handy group of experts, we are satisfying the fluctuated necessities of customers by offering best quality Stainless Steel 304/304L/304H Plates and Sheets. This Stainless Steel 304/304L/304H Sheets is made utilizing finest quality Stainless Steel 304/304L/304H Sheets and propelled innovation. Tuned in to various needs of our overflowing customers, we redo the whole range in various sizes and shapes. Our offered Stainless Steel 304/304L/304H Sheets has increased extraordinary worth amongst our customers for its unmistakable elements



316L/316 TI STAINLESS STEEL SHEET



We are providing excellent varieties of Stainless Steel 316L/316Ti Sheets, which are supplied in the grades of 316 TI. They are offered in various dimensional specifications, shapes and sizes. They are known for long lives and are used in different sorts of fabrication and engineering projects. These plates and sheets are tested on different quality parameters and are carefully designed and manufactured under rigid quality control procedures. They are precisely developed and are known for dimensional accuracy, maximum performance and simple maintenance.

Grade 316 is the standard molybdenum-bearing assessment, second in essentialness to 304 amongst the austenitic stainless steels. The molybdenum gives 316 best broad disintegration safe properties over Grade 304, particularly higher impenetrability to setting and crevice utilization in chloride circumstances. Stainless Steel 316L/316Ti Sheets has awesome forming and welding properties. It is expeditiously brake or roll surrounded into a variety of parts for applications in the mechanical, basic, and transportation fields. Grade 316 similarly has noteworthy welding qualities. Post-weld treating is not required when weldi

FEATURES :

- High tensile strength
- Long service life
- Resistant against corrosion
- Highly machinable
- Very strong and tough
- Can be hardened by heat treatment
- Magnetic



FEATURES :

- Dimensional accuracy
- Uniform thickness
- Durability
- Easy installation
- High tensile strength
- Corrosion resistance
- Precisely engineered
- Easy to install
- Perfect finish

309S/309H STAINLESS STEEL SHEET

Precision impex exporters & suppliers of SS 309S/309H Sheets. Grade 310, joining amazing high temperature properties with incredible adaptability and weldability, is planned for high temperature organization. It restricts oxidation in relentless organization at temperatures up to 1150°C gave decreasing sulfur gasses are not present. It is similarly used for sporadic organization at temperatures up to 1040°C.

We would like to establish business relations with reputed concern like yours. We assure you that you will certainly find in our products quality and rate most competitive at right time with excellent services. Your satisfaction is the award for our good quality and service



410/410S STAINLESS STEEL SHEET

Owing to our outstanding team of professionals, we have been able to offer high quality SS 410/ 410S Sheet. This sheet is made with premium quality of SS alloy which is helpful in minimizing corrosion rate and provides a guarding layer on its surface. Also, these products conform to the international quality norms. Our clients can avail our products at industry leading prices. Its Used in food industries, chemical industries , electrical industries, generator industries, shaft industries, cement industries, gais industries power project.

We can supply 410/410S Stainless Steel Sheet in widths of 48" down to .250" and standard lengths of 96" and 120" however are fit for shearing and leveling to your required lengths. 410/410S Stainless Steel circle can in like manner be opening to your pined for width.

FEATURES :

- Dimensional accuracy
- Uniform thickness
- Durability
- Easy installation
- High tensile strength
- Corrosion resistance
- Precisely engineered
- Easy to install
- Perfect finish



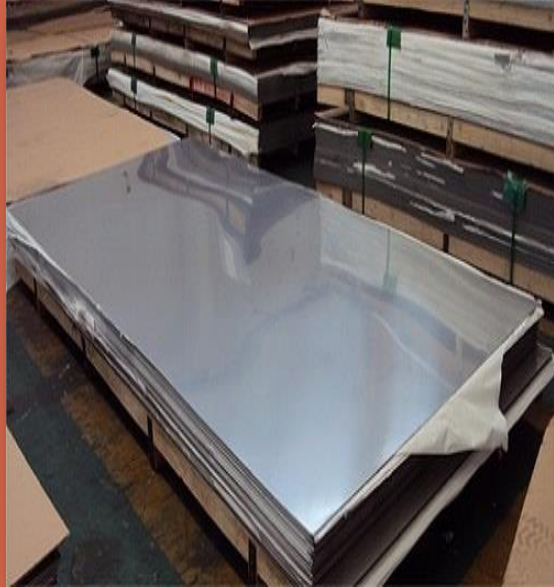
409/439/ 441 STAINLESS STEEL SHEET

We are exporters & suppliers of 409/439/ 441 Stainless Steel Sheet. 409/439/ 441 Stainless Steel which is an extensively helpful hardenable stainless steel. Its quality, extraordinary flexibility and impenetrability to disintegration in smooth show, steam and tender engineered circumstances make it suitable for uncommonly centered around parts. All of our 410 stainless steel sheet and stainless steel twist is asked for to specific decimal thicknesses.

We can supply 409/439/ 441 Stainless Steel Sheet in widths of 48" down to .250" and standard lengths of 96" and 120" however are fit for shearing and leveling to your required lengths. 409/439/ 441 Stainless Steel circle can in like manner be opening to your pined for width.

FEATURES :

- Dimensional accuracy
- Uniform thickness
- Durability
- Easy installation
- High tensile strength
- Corrosion resistance
- Precisely engineered
- Easy to install
- Perfect finish



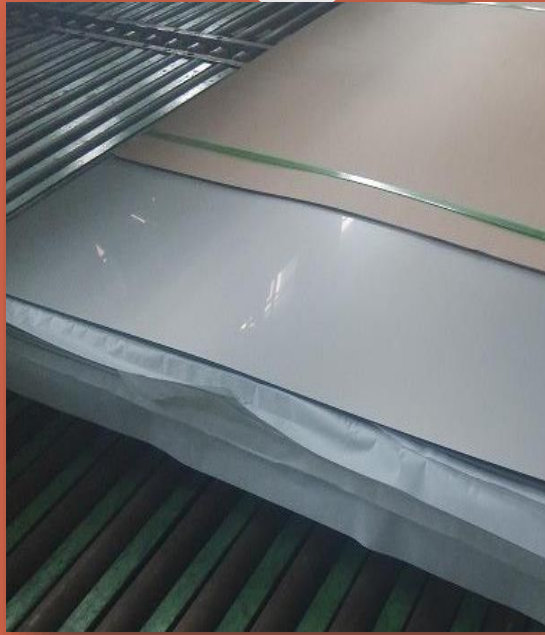
ASTM/ASME SA 240 STAINLESS STEEL SHEET

➤ ASME SA240 standard specification for chromium and chromium-nickel stainless steel plate, sheet, and strip for pressure vessels and for general applications sa240 grade 800 800H 904L 201 202 XM-19 XM-31 XM-17 XM-18 XM-19 301 301L 302 304 304L 304H 304N XM-21 304LN 305 309S 309H 309Cb 309HCb 310S 310H 310Cb 310HCb 310MoLN 316 316L 316H 316Ti 316Cb 316N 316LN 317 317l 317LM 317LMN 317LN 321 321H 334 347 347H 348 348H XM-15 2205 2304 255 2507 329 405 409 410 410S 429 430 439 434 436 444 XM-33 XM-27

➤ **Range :** 1mm to 200mm Thk in 1000 mm to 3000 mm WIDTH x 2500 mm / 5000 mm / 10000 mm /coil.

➤ **Stainless Steel Sheets :** ASTM / ASME SA 240 304, 304L, 304H, 309S, 309H, 310S, 310H, 316, 316H, 316L, 316 TI, 317, 317L, 321, 321H, 347, 347 H , 409, 410, 410S, 430

➤ **Duplex Steel Sheets :** ASTM / ASME SA 240 UNS NO. S 31803, S 32205, S 32550, S 32750, S 32760



430 /14509 / 436L / 444/429 STAINLESS STEEL SHEET

Precision Impex are exporters & suppliers of 430 /14509 / 436L / 444 / 429 Stainless Steel Sheet. 430 /14509 / 436L / 444 / 429 Stainless Steel which is an extensively helpful hardenable stainless steel. Its quality, extraordinary flexibility and impenetrability to disintegration in smooth show, steam and tender engineered circumstances make it suitable for uncommonly centered around parts. All of our 410 stainless steel sheet and stainless steel twist is asked for to specific decimal thicknesses.

We can supply 430 /14509 / 436L / 444 / 429 Stainless Steel Sheet in widths of 48" down to .250" and standard lengths of 96" and 120" however are fit for shearing and leveling to your required lengths. 430 /14509 / 436L / 444 / 429 Stainless Steel circle can in like manner be opening to your pined for width.

FEATURES :

- Dimensional accuracy
- Uniform thickness
- Durability
- Easy installation
- High tensile strength
- Corrosion resistance
- Precisely engineered
- Easy to install

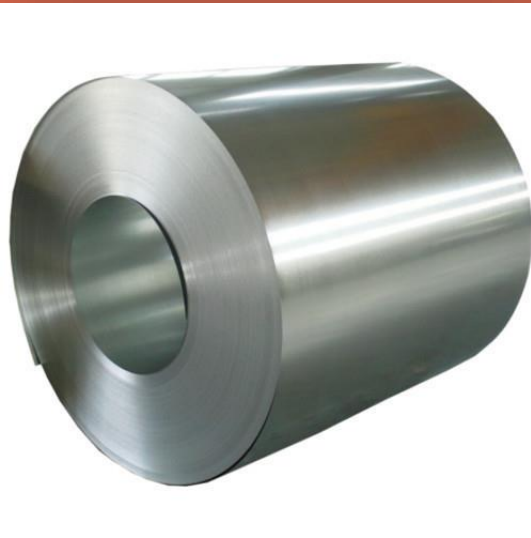
Perfect finish

304/304L/304H STAINLESS STEEL COIL



We are a specialist distributor, processor and supplier of stainless steel coils in grade 304/304L/304H stainless steels in all finishes. We are suppliers of ASTM A240 Stainless Steel 304/304L/304H coils ;made by world's leading mills, such as Jindal Stainless Ltd., POSCO, DKC-Korea, European Mills, NTK- Japan, TISCO, Aperam and others. We can supply cut to size Stainless Steel 304/304L/304H Coils, with both narrow and wide widths. 304/304L/304H stainless steel is a T 300 Series Stainless Steel austenitic. It is defined as a Chromium-Nickel austenitic alloy. NG Industries is a leading supplier and exporter of Stainless Steel 304/304L/304H Coil. We provide Stainless Steel 304/304L/304H Coil as per the requirements of our customers and deliver quality products on time.

Stainless Steel 304/304L/304H Coils are available in various types like ASTM, ASME, AISI A 276 , SA 276, A 479, SA 479 Stainless Steel 304/304L/304H Coils.



□ Coils

ASTM/ASME SA240 Stainless Steel Coil

304/304L/304H Stainless Steel Coil

309S Stainless Steel Coil

310S Stainless Steel Coil

316/316H Stainless Steel Coil

316L/316TI Stainless Steel Coil

317/317L Stainless Steel Coil

321 Stainless Steel Coil

347 Stainless Steel Coil

409 Stainless Steel Coil

410/410S Stainless Steel Coil

430 Stainless Steel Coil



304/304L/304H STAINLESS STEEL STRIPS



**Stainless Steel 304 Strips / UNS S30400/
S30403/Euronorm: 1.4301 / 1.4303/AFNOR: Z5 CN 18.09 /
Z2 CN 18.10 /DIN: X5 CRNI 18 10 / X2 CRNI19 11**

We are exports and offering 430 Stainless Steel Coil. This coil is manufactured using alloy 409. We acquire this gamut from most qualified and skilled vendors of the market. Our customers can avail this coil at very nominal rates.

Alloy 304 a T-300 series stainless steel austenitic, which has a minimum of 18% chromium and 8% nickel. Type 304 has a maximum carbon of 0.07% . It is the standard “18/8 stainless” that is commonly found in pans and cooking tools. Alloy 304 is the most versatile and widely used alloy in the stainless steel family. Ideal for a wide variety of home and commercial applications, Alloy 304 exhibits excellent corrosion resistance and has a high ease of fabrication, outstanding formability. The austenitic stainless steels are also considered to be the most weldable of the high-alloy steels and can be welded by all fusion and resistance welding processes.

Used in Food Industries, Chemical Industries , Electriecal Industries, Genrater Industries, Shaft Industries, Cement Industries, Gas Industries, Power Project etc..



316/316Ti/316L STAINLESS STEEL STRIPS

316 stainless steel contains an addition of molybdenum that gives it improved corrosion resistance. This is particularly apparent for pitting and crevice corrosion in chloride environments. 316L, the low carbon version of 316 stainless steel, is immune to grain boundary carbide precipitation (sensitisation). This makes it suited to use in heavy gauge (over about 6mm) welded components. For elevated temperature applications the high carbon variant, 316H stainless steel and the stabilised grade 316Ti stainless steel should be employed. The austenitic structure of 316 stainless steel gives excellent toughness, even at cryogenic temperatures.

Property data given in this document is typical for flat rolled products covered by ASTM A240/A240M. ASTM, EN or other standards may cover products sold. It is reasonable to expect specifications in these standards to be similar but not necessarily identical to those given in this datasheet. Stainless steel grade 316Ti contains a small amount of titanium. Titanium content is typically only around 0.5%. The titanium atoms stabilise the structure of the 316 at temperatures over 800°C. This prevents carbide precipitation at the grain boundaries and protects the metal from corrosion. The main advantage of 316Ti is that it can be held at higher temperatures for a longer period without sensitisation (precipitation) occurring. 316Ti retains physical and mechanical properties similar to standard grades of 316.

Steel strips 316 are widely used in industrial applications where reliability and assurance matters a lot. The offered steel strips 316 is manufactured using quality raw steel, progressive technology and under the supervision of deft professionals. In addition with, clients can get the steel strips 316 from us within the stipulated time frame.



316L/316Ti STAINLESS STEEL COIL

316L, the low carbon version of 316 stainless steel, is immune to grain boundary carbide precipitation (sensitisation). This makes it suited to use in heavy gauge (over about 6mm) welded components. For elevated temperature applications the high carbon variant, 316H stainless steel and the stabilised grade 316Ti stainless steel should be employed. The austenitic structure of 316 stainless steel gives excellent toughness, even at cryogenic temperatures. Property data given in this document is typical for flat rolled products covered by ASTM A240/A240M. ASTM, EN or other standards may cover products sold. It is reasonable to expect specifications in these standards to be similar but not necessarily identical to those given in this datasheet.

Stainless steel grade 316Ti contains a small amount of titanium. Titanium content is typically only around 0.5%. The titanium atoms stabilise the structure of the 316 at temperatures over 800°C. This prevents carbide precipitation at the grain boundaries and protects the metal from corrosion. The main advantage of 316Ti is that it can be held at higher temperatures for a longer period without sensitisation (precipitation) occurring. 316Ti retains physical and mechanical properties similar to standard grades of 316.

Used in Food Industries, Chemical Industries, Electrical Industries, Generator Industries, Shaft Industries, Cement Industries, Gas Industries, Power Project etc..



□ Strips

- [317/317L Stainless Steel Strips](#)
- [321 Stainless Steel Strips](#)
- [347/347H Stainless Steel Strips](#)
- [409 Stainless Steel Strips](#)
- [410/410S Stainless Steel Strips](#)
- [420 Stainless Steel Strips](#)
- [430 Stainless Steel Strips](#)

Vimal Jain



CONTACT US:-

PRECISION IMPEX

**84 3RD KUMBARWADA, DR M.G. MAHIMTURA
MARG, MUMBAI 400004. MAHARASHTRA
INDIA**

MOBILE NO : +91 9892488414

TELE: +91 22 66362434

E-MAIL: info@precisionimpex.com

WEBSITE: www.precisionimpex.com